
Knowledge Sharing Platform (KSP) Workshop
for the Energy Smart Communities Initiative
ESCI Executive Meeting

**Green Transportation Innovation
in Chinese Taipei**

OVERVIEW

2

- **“Green”** goes beyond an environmental protection concept, we are working to turn it into a **“life-style”**
- Chinese Taipei have actively pursued the development of **public transportation** as our main **Green Transportation Policy**
- The development in **“Smart Transport”** leads Chinese Taipei into a new era of **“Smart Living”**



Outline

- Public Transportation System Plan
- Off-shore Island Electric Motorcycle Promotion Program
- Green Tourism Transport
- Bicycle-Friendly Environment



2

● Public Transportation System Plan

The 3-year public transportation system plan has been launched since 2010, and that is focused on

- Improvements to public transport infrastructure
- Increasing the ridership of public transport by changing the general public's travel behavior
- Providing public transport services to the socially disadvantaged
- Seamless public transport service



3

• Public Transportation System Plan

An integrated electronic fare collecting system provides seamless service among rapid transit, railway and bus to the general public



4

• Off-shore Island Electric Motorcycle Promotion Program

➤ Implementing an “Off-shore Island Electric Motorcycle Promotion Program” in Green Island to achieve “Green Transport Island”



5

• Green Tourism Transport

- Promoting “Green Tourism Transport” by offering shuttle bus services among recreation areas and major public transport terminals



6

• Green Tourism Transport

- These shuttle services encourage travelers to use public transportation through special tour packages
- 20 shuttle lines have been implemented in 10 local jurisdictions with considerable patronage
- Total passengers in 2010 : 760 Thousands
2011 (from January to June) : 400 Thousands



7

• Bicycle-Friendly Environment

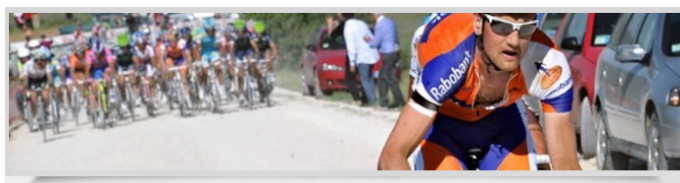
- Providing island-wide “bicycle-friendly” environment with dedicated bicycle paths, seamless connection to public transport, and bicycle travel information system



8

• Bicycle-Friendly Environment

- Along our beautiful Pacific (Eastern) Coastline alone, we have developed 867 kilometers of dedicated bicycle paths
- Chinese Taipei will be holding the “2011 Cycling Festival” along our Pacific Coast



9

-
- **Chinese Taipei have formally entered a new era of “Low Carbon Smart Transport” development**
 - **In the future, we will continue to adopt innovative concepts to develop low carbon intelligent transport systems that are both user friendly and environmentally friendly**



Thank you for your attention!

